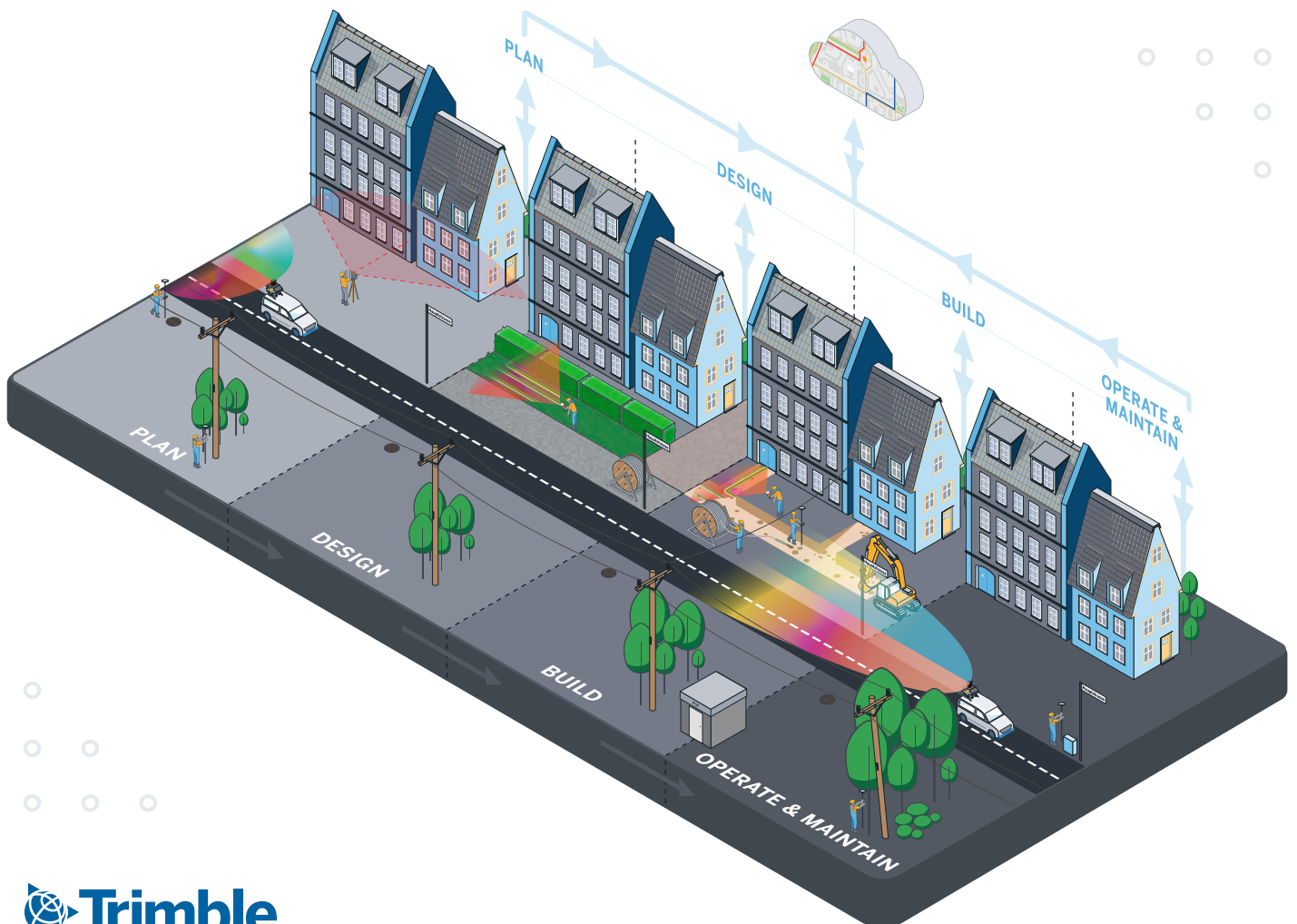


Fiber to the Home

APPLICATION HIGHLIGHT

Whether you are planning a Fiber to the Home (FTTH) network, registering a cable, or are looking to verify your design in the field, Trimble® Geospatial solutions enable you to reliably capture survey data and transform it into intelligence to deliver increased productivity and improved decision-making.

From planning to design and build, through to operation and maintenance, accurate geospatial data is critical in all phases of a FTTH project and facilitates the efficient design, construction and effective management of your network.



Plan

- Pre-survey the project area to select the most efficient route for fiber deployment
- Measure the as-built infrastructure and investigate ground characteristics along the proposed route
- Map any relevant assets, such as poles or manholes, as well as their conditions
- Share data in the cloud for visualization, measurements and collaborative planning

Design

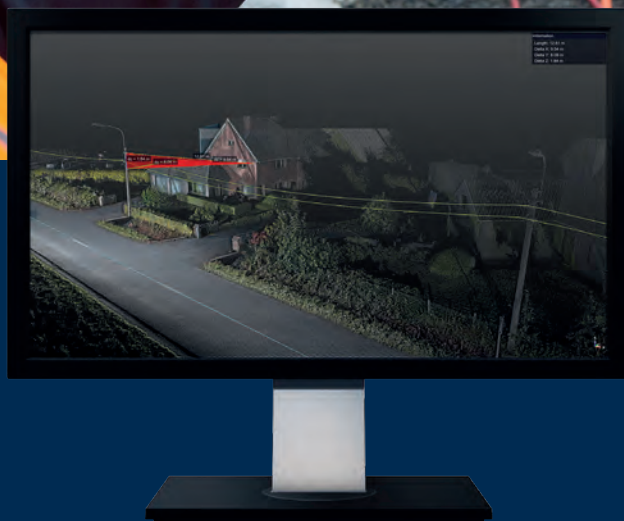
- Review and walkout the preliminary design to verify the feasibility of a planned network
- Improve your design based on building (number & type) information and household count
- Identify potential safety hazards and avoid damage to existing infrastructure
- Collect up to date and highly precise data to assess project costs, create accurate maps and detailed designs of the planned network

Build

- Accurately record location information timely and integrate it within your own application, website, GIS, or CAD system
- Re-survey the project area to ensure that the new infrastructure has been built to plan or record modification
- Create a digital twin of the network including detailed information on the location of network assets, fiber optic cables, and splices

Operate & Maintain

- Inspect network assets and obstructions periodically to identify and fix faults
- Update your system of records with changes and repairs to plan network upgrades or deploy new assets



About Trimble Geospatial

Trimble is a global technology company that provides advanced solutions for a wide range of industries, including telecommunications.

The Geospatial division offers a variety of highly integrated hardware and software solutions, such as GNSS receivers, 3D laser scanning systems, mobile mapping sensors, CAD software and much more. Trimble Geospatial has a global network of distribution partners, located in over 100 countries, providing local expertise, support and service.

For more information, visit geospatial.trimble.com