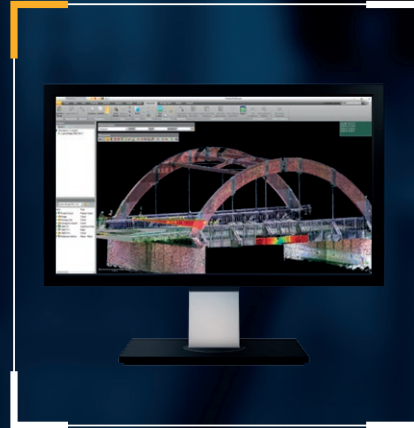


Trimble Laser Scanning

3D LASER SCANNING SOLUTIONS



Trimble's 3D laser scanning solutions provide superior accuracy and range for even the most challenging scanning environments.

Each project requires the right tools—whether you're delivering a topographic survey, scan data of as-built conditions, performing comprehensive data analysis, or creating a renovation model based on an existing structure. Trimble® has developed the 3D scanning solutions you can trust to meet these challenges and quickly capture, analyze, model and produce precise deliverables.

Decide what is right for you by comparing the features and software components of Trimble 3D laser scanning solutions that boost efficiency in the field and in the office without compromising performance or accuracy.

Find out more at:

[geospatial.trimble.com](https://www.geospatial.trimble.com)



COMPARE*	3D LASER SCANNERS		3D LASER SCANNING TOTAL STATION
	 <p>TRIMBLE X7</p>	 <p>TRIMBLE X12</p>	 <p>TRIMBLE SX12</p>
Range	0.6 m–80 m	0.3 m–365 m (Ambiguity Interval)	0.9 m–600 m
Max speed	500 kHz	2.187 mHz	26.6 kHz
Typical scan duration	2 min–7 min	1 min–3 min	6 min–12 min
Imaging	3 x 10 MP	80 MP	3 x 8.1 MP
	1 minute for full dome	2 minutes for full dome	2.5 minutes for full dome
Weight (incl. battery)	5.8 kg	6.5 kg	7.8 kg
Calibration	Automatic calibration	Annual service	Manual field calibration service every 2 years
Standard warranty	2 years	2 years	2 years
Typical workflow	In-field registration or target and cloud based registration in the office	In-field registration or target and cloud based registration in the office	Survey workflow with automatic scan registration
Field software	Trimble® Perspective software and Trimble Perspective mobile	Trimble Perspective and onboard interface	Trimble Access™ software
Office software	Trimble RealWorks™ or Trimble Business Center software	Trimble RealWorks or Trimble Business Center software	Trimble RealWorks or Trimble Business Center software

* Refer to datasheets and FAQs for full details and specifications.

FIELD SOFTWARE		OFFICE SOFTWARE	
TRIMBLE PERSPECTIVE	TRIMBLE ACCESS	TRIMBLE REALWORKS	TRIMBLE BUSINESS CENTER
In-field control and complete registration for X7 and X12 laser scanners	Combine GNSS data and images from the SX12 total station all in one job	Trimble's flagship scanning software	The industry's leading survey software
Scanner control for X7 and X12	Scanner control for SX12	Scan and image processing	Field-to-finish survey software
Automatic infield registration	Collect survey data and high speed scans easily	Automated registration tools	Roadway/corridor sections
Dynamic 2D and 3D viewing	Reliably collect the most complete datasets	2D CAD/3D models	Volumetrics and earthworks
Labels, annotations, measurements	Efficient data management within any geodetic coordinate system	Inspection/classification	Scan classification/drafting
Registration refinement and reports	Topo, stakeout, and surface inspection	3D animations	Feature coding