



TRIMBLE BUILDING CONSTRUCTION LAYOUT SOLUTIONS: THE CONNECTED CONSTRUCTION SITE

THE CONNECTED CONSTRUCTION SITE: ACCURATE LAYOUT WHERE AND WHEN YOU NEED IT

Trimble Building Construction Positioning Solutions give contractors more control of their job sites... delivering significant improvements in construction accuracy and productivity.

By connecting your office and job site through wireless data transfer, design updates can flow between field and office in real time. Jobs can be created and maintained by someone in the main office and emailed to various sites. Daily layout progress can be monitored. Every question can be answered instantly. Every decision is an informed one. The bottom line is greater control, cost savings and maximized productivity.



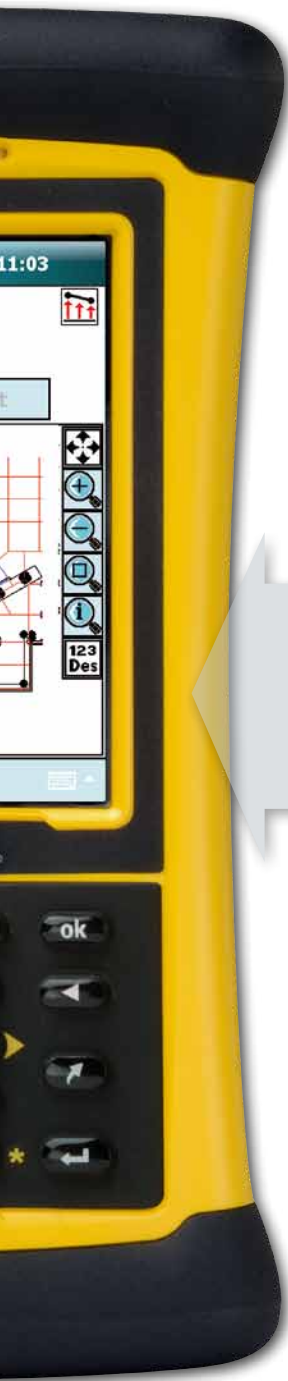
THE CORE OF THE CONNECTED SITE

The pocket-sized Trimble LM80 Layout Manager lets you carry, manage, work with, and lay out your job site blueprint. This convenience, combined with the power of wireless communication for design updates, a common user interface and specialized software make the LM80 a revolutionary tool and the heart of The Connected Construction Site.

Using the LM80, you can:

- input blueprint dimensions to build a digital replica of the layout plan, or import LM80 Desktop and CAD data to automatically create your layout plan
- layout your design, create points in the field, calculate angles and dimensions and collect asbuilt data
- take control of your jobsite by sending and receiving design updates and progress data without waiting on third party specialists





TRIMBLE LAYOUT SOLUTIONS: TAKING THE DESIGN TO THE JOB SITE

When contractors can take CAD designs or BIM data into the field, they have the information at hand for just about any layout job... and more. Wireless communication with the office ensures that data is as current as possible. The result? More productivity, less time waiting on subcontractors and less rework.

CONCRETE FORMS AND ANCHOR BOLTS

Lay out complex concrete forms or anchor bolts from any location by referencing any two known points.

AS-BUILT CHECKS

Check the work of others and create documentation for change orders when necessary. Direct Reflex capabilities make as-built checks a one-person job.

CONTROL POINTS AND OFFSET HUBS

Lay out control points and offset hubs faster and more cost-effectively. Work on your schedule.

SET CONTROL LINES

Lay out control lines for subcontractors faster and more accurately than with tapes and theodolites.

EXCAVATION LINES

Lay out all lines from one reference location with no string lines, transits or theodolites.

TOPOGRAPHICAL MEASUREMENTS

Easily collect topographical data and import it into third-party software for elevation and cut and fill analysis.

CHECKING PROPERTY BOUNDARIES

Use the LM80 to make minor adjustments to the building position as needed without waiting or paying subcontractor fees.

ONE-PERSON LAYOUT FOR MAXIMUM PRODUCTIVITY

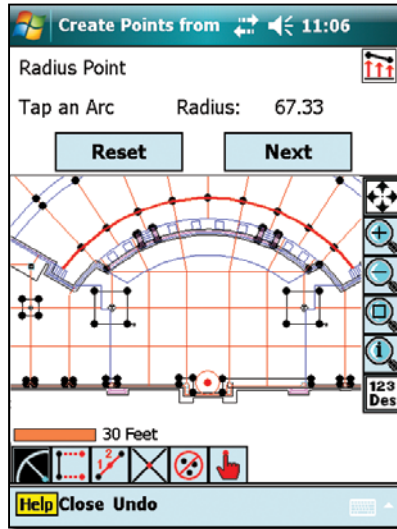
ROBOTIC, ONE-PERSON OPERATION

When combined with Trimble RTS series of Robotic Total Stations, the LM80 Layout Manager significantly increases accuracy, reliability and productivity. With one-person operation, the robotic total stations will track you and update measurement information at the prism pole—where you need the positioning. This can increase productivity by 80% over a conventional mechanical system.

GET THE JOB DONE FAST AND UNDER BUDGET!

Compared to traditional methods, Trimble layout solutions help you quickly measure and lay out point positions. Setup is easier than ever—just position the total station where you can easily see the layout area, measure two known points and start to lay out all excavation lines, column lines, concrete forms and anchor bolts from a single location. The LM80's graphical display makes creating and staking the layout points simple.

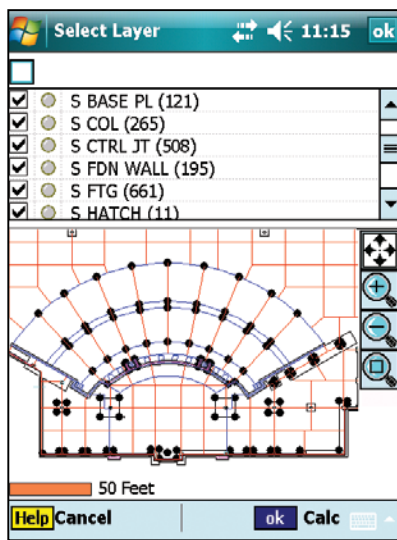




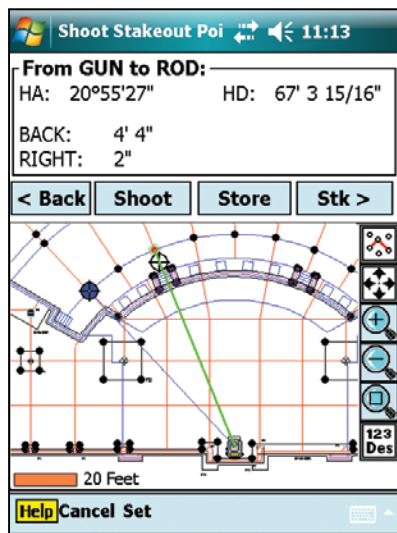
TAKE THE ACCURACY OF YOUR 3D DESIGN INTO THE FIELD FOR LAYOUT



Use your CAD files and 3D BIM models to create points and send stakeout information directly to the jobsite via email. Perform as-built and email back for verification, reports and requests for information.



Manage layers and stakeout points in the field. Create control points and lines as needed. Trimble LM80 is specifically designed for contractors who want to increase layout productivity and field efficiencies.



Dramatically increase your layout accuracy and production. Using the LM80 with the Trimble series of Robotic Total Stations layout hundreds and hundreds of more points per day with only one person. Utilize the new Trimble WLAN Robotic total station for optimal convenience and 100% wireless field operation.

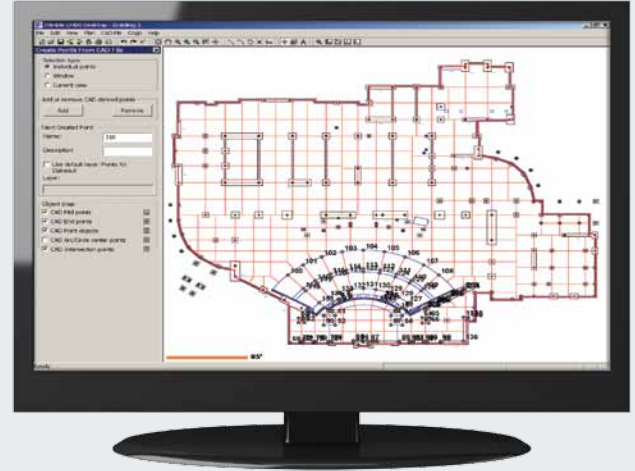
A POWERFUL WIRELESS PACKAGE

TRIMBLE LM80 DESKTOP SOFTWARE

The LM80 Desktop software is a valuable, easy-to-use tool for the LM80 or construction total station. Featuring an intuitive graphical user interface, the LM80 Desktop makes it easy to draw in your blueprint and create a digital replica of your project.

You can also create points quickly from a digital CAD drawing and upload them to the LM80, as well as download CAD background files to your LM80 for easy reference on the job site.

The LM80 Desktop can send a point file directly to a total station for onboard layout.



TRIMBLE LM80 HANDHELD CONTROLLER

The rugged Trimble controller lets you carry, manage, work with, and lay out your jobsite blueprint in a digital format. On the jobsite the WLAN feature allows you to connect wirelessly to the Robotic Total Station, eliminating cables and providing maximum flexibility as you move around the site. In addition the controller hardware connects to a wireless network to enable the transfer of data and information between the office and field. Reducing delays associated with travel and ensuring field crews have the most up-to-date design information.

TRIMBLE LM80 - WIRELESS (NOMAD) SPECIFICATIONS

Microsoft Windows Mobile 6.0 software
806 MHz Xscale Processor
1GB nonvolatile Flash storage
Sunlight-readable color TFT display (480x640) with LED backlight
Over 15 hours of continuous operation at 20 °C (68 °F)
1 x Compact Flash / 1 x Secure Digital slot expansion
Standard 9-pin RS-232 and USB ports
Li-Ion rechargeable battery pack
Weight: 596 g (21 oz)
Operating Temperature: -30 °C to +60 °C (-22 °F to +140 °F)
IP67 dust and waterproof (temporary immersion)
Survives multiple drops up to 1.22 m (4 ft)
Backlight numeric style keypad
Integrated Bluetooth 2.0
Integrated 802.11b/g wireless capabilities
Integrated GPS (SiRFStar III, WAAS capable)





MAXIMUM FLEXIBILITY AND COST SAVINGS

Application programs let you set up anywhere faster and perform all job site layout and measurement tasks yourself. You'll reduce your need for outsourcing and lower your costs.

EASY TO LEARN AND USE

Easy-to-follow user interface shortens the learning curve and speeds up operation. With minimal training, you'll find you don't need to be a surveyor to use these total stations.

ONE-PERSON OPERATION

Handle all layout tasks with only one person. Regardless of the complexity, your layout will be quick and accurate.

TRIMBLE ROBOTIC TOTAL STATIONS

The Trimble Robotic Total Stations connects to the LM80 to provide continuous measurement information for the accurate layout of your design data. On the jobsite, you can set up the total station in a convenient, visible location and perform positioning up to 700 meters away with the prism pole. In addition, to reach dangerous or difficult locations, you can use the reflectorless distance measurement capability to measure positions up to 800 meters away. A true one-person solution, which dramatically increases productivity over traditional layout methods!



Trimble Robotic Total Stations Specifications	Trimble RTS555	Trimble RTS655	Trimble RTS633
Robotic Communication Type	Internal 2.4 GHz WLAN Eliminates need for external radio	Internal 2.4GHz Radio	Internal 2.4 GHz Radio
Robotic Communication Type	< 200 m (656 ft.)	< 700 m (2296 ft.)	< 700 m (2296 ft.)
Angle Accuracy - DIN18723	Horizontal: 5" (1.5 mgon) Vertical: 5" (1.5 mgon)	Horizontal: 5" (1.5 mgon) Vertical: 5" (1.5 mgon)	Horizontal: 3" (1.0 mgon) Vertical: 2" (0.6 mgon)
Standard Measurement	± 2 mm = 2 ppm	± 2 mm = 2 ppm	± 3 mm = 2 ppm
Measurement Distance - 1 Prism	< 3,000 m (9,800 ft.)	< 3,000 m (9,800 ft.)	< 2,500 m (8,202 ft.)
DR Range - Kodak (90% reflective)	Up to 150 m (492 ft.)	Up to 150 m (492 ft.)	Up to 800 m (2,625 ft.)
Operating Temperature	-20 °C to 50 °C (-22 °F to 140 °F)	-20 °C to 50 °C (-22 °F to 140 °F)	-20 °C to 50 °C (-22 °F to 140 °F)
Dust and Water Proofing	IP55	IP55	IP55
Operating Time	Approx. 6 hours on single battery	Approx. 6 hours on single battery	Approx. 6 hours on single battery



The Connected Construction Site.

Trimble Building Construction solutions give contractors more control of their job sites. With products for jobsite management, site prep, concrete layout, MEP layout and asset management, Trimble solutions connect construction processes with information. Wireless data transfer can connect the office and job site so designs are always updated. Layout progress can be monitored and confirmed. Every question can be answered instantly. Every asset managed for profitability.

Connecting your site will mean greater control, and significant improvements in construction accuracy and productivity.

NORTH AMERICA

**Trimble Building
Construction Division**
10355 Westmoor Drive, Suite #100
Westminster, Colorado 80021
USA
800-767-4822 (Toll Free)
+1-303-323-4111 Phone
+1-720-587-4685 Fax
www.trimble.com

EUROPE

Trimble Germany GmbH
Am Prime Parc 11
65479 Raunheim
GERMANY
+49-6142-2100-0 Phone
+49-6142-2100-550 Fax

AFRICA & MIDDLE EAST

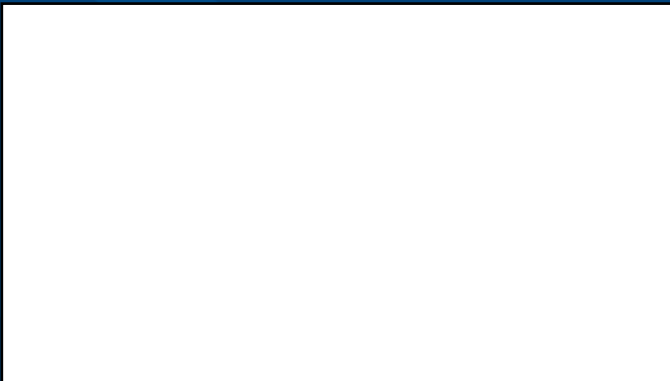
Trimble Export Middle-East
P.O. Box 17760
LOB 18 1606 / 1607
JAFZ View
Dubai
UAE
+971-4-881-3005 Phone
+971-4-881-3007 Fax

ASIA-PACIFIC

**Trimble Navigation
Singapore PTE Ltd.**
80 Marine Parade Road, #22-06
Parkway Parade
Singapore, 449269
SINGAPORE
+65 6348 2212 Phone
+65 6348 2232 Fax

CHINA

Trimble Beijing
Room 2602-05, Tengda Plaza,
No.168 Xiwai Street
Haidian District, Beijing,
CHINA 100044
+86-10-8857-7575 Phone
+86-10-8857-7161 Fax
www.trimble.com.cn



YOUR LOCAL TRIMBLE OFFICE OR REPRESENTATIVE